

Alaska Department of Fish and Game

Habitat Section
Southeast Region



East Port Frederick Uncataloged Stream

ADDITION

Water body name:

Survey date: 8/23/2022

Quad: Juneau A-5

Species & Lifestage:

Upper Reach Latitude: 58.051000 **Longitude:** -135.543943

Survey crew: FC, RR

Lower Reach Latitude: 58.050571 **Longitude:** -135.546801

Findings: We surveyed this uncataloged stream using a backpack electrofisher and GPS and captured juvenile coho salmon. The stream descends a slight hillside and flows through a gravel stream into the intertidal (Table 1; Figures 1, 2).

Recommendations: Add this uncataloged stream to the anadromous waters catalog for rearing coho salmon (Figure 3).

Nomination: Pending

Table 1.—Uncataloged stream survey data.

Waypoint	Latitude	Longitude	Notes	Stream Width ft	Stream Substrate	Habitat Features	Gradient %	Sample Effort	Sample Results
1466	58.050978	-135.543949	Start of survey on small stream trickling out over intertidal zone. Rotted adult chum carcass at outlet. 2 shellfish rearing bags with attached floats in stream near outlet from adjacent oyster farming operation. Several small pools past tree line comprising good rearing habitat. 1-yr CO capture at waypoint. Series of rootwad falls upstream of CO capture that may preclude fish passage dependent on flow. Advancing upstream.	4-6	Small Gravel Large Gravel	Spawning Substrate	2-4	EF	2 CO
1467	58.050988	-135.543817	No fish capture. Gradient increases upstream and channel becomes incised.	2-4	Small Gravel Large Gravel		4-6	EF	No Fish



Figure 1.—Juvenile coho salmon captured at waypoint 1466.



Figure 2.—Channel at waypoint 1466.

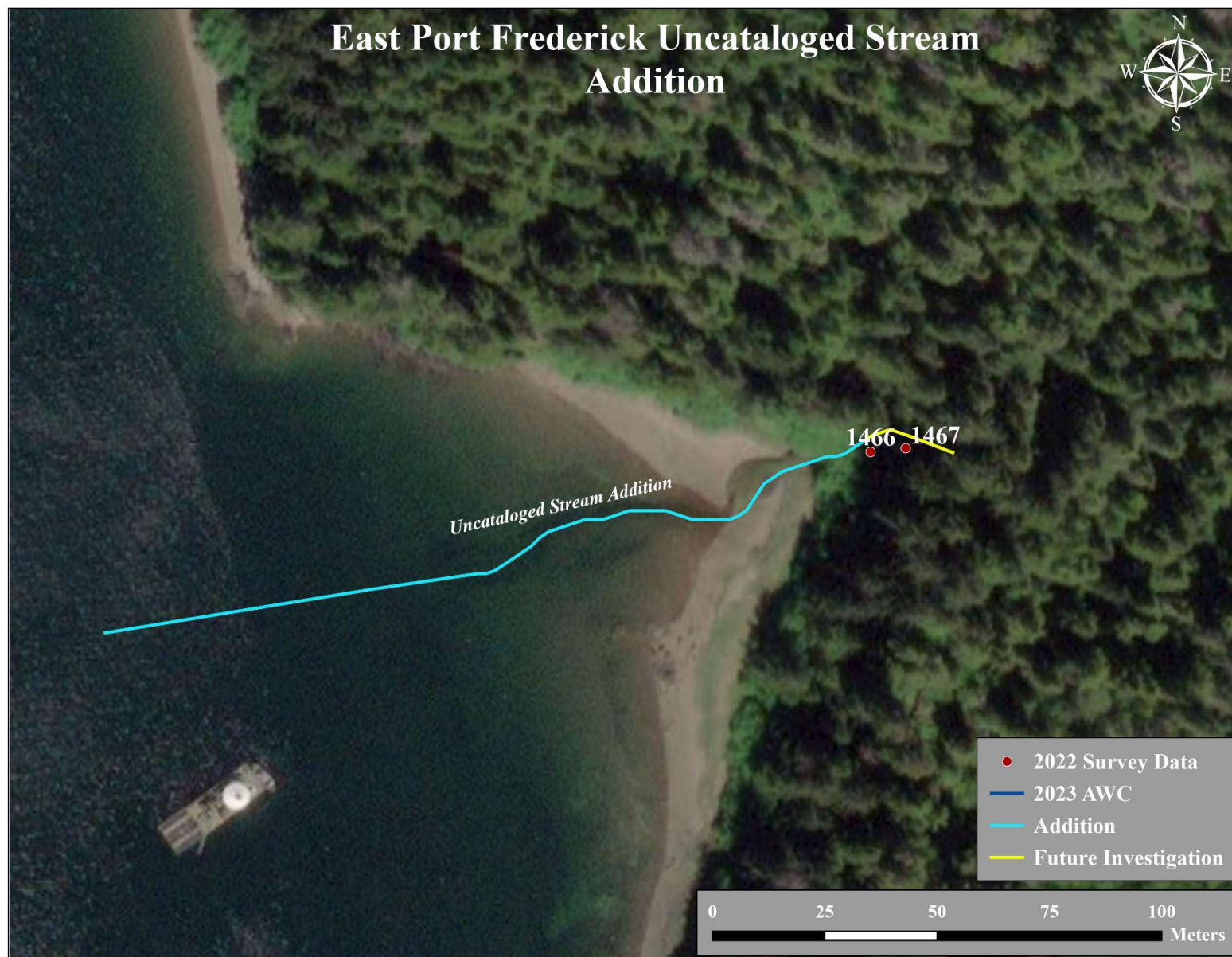


Figure 3.—Uncataloged stream addition map.